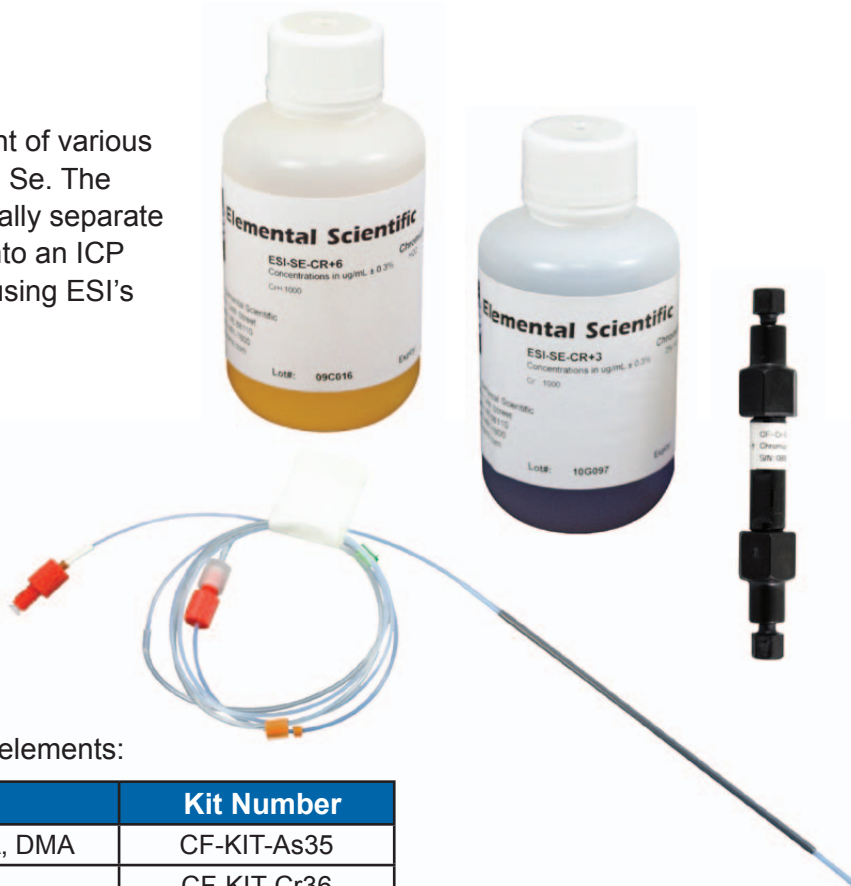


## Speciation Kits

ESI speciation kits allow precise measurement of various elemental species including As, Cr, I, Hg, and Se. The specially-designed columns chromatographically separate target species that are subsequently eluted into an ICP or ICPMS. Speciation data can be analyzed using ESI's periSPEC software.

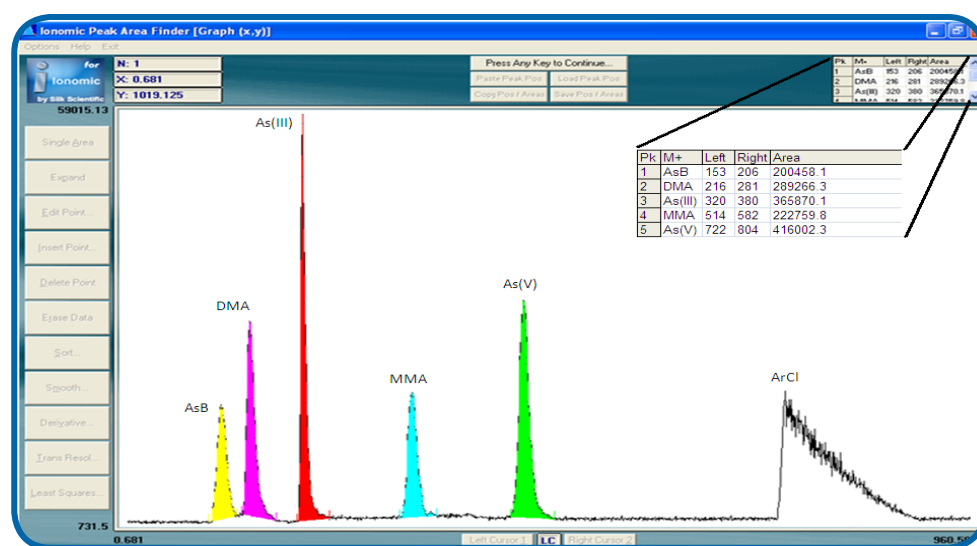
### SPECIATION KITS INCLUDE:

- Column
- Species-specific standards
- Probe kit
- All necessary valves and tubing
- Speciation user guide with eluent recipes



Speciation kits are available for the following elements:

Element	Species	Kit Number
<b>Arsenic</b>	As(III), As(VI), AsB, MMA, DMA	CF-KIT-As35
<b>Chromium</b>	Cr(III), Cr(VI)	CF-KIT-Cr36
<b>Iodine</b>	I <sup>-</sup> , IO <sub>3</sub> <sup>-</sup>	CF-KIT-I
<b>Mercury</b>	Hg, MeHg	CF-KIT-MeHg
<b>Selenium</b>	Se(IV), Se(VI)	CF-KIT-Se46



Detection Limits for Various Species	
Element	MDL (ppt)
<b>Chromium</b>	
Cr(III)	3
Cr(VI)	4
<b>Mercury</b>	
Hg	0.05
MeHg	0.1
<b>Iodide</b>	
I <sup>-</sup>	0.3
IO <sub>3</sub> <sup>-</sup>	0.2

periSPEC is a simple and relatively inexpensive software that utilizes an Excel-based spreadsheet to integrate the chromatographic peak areas.