

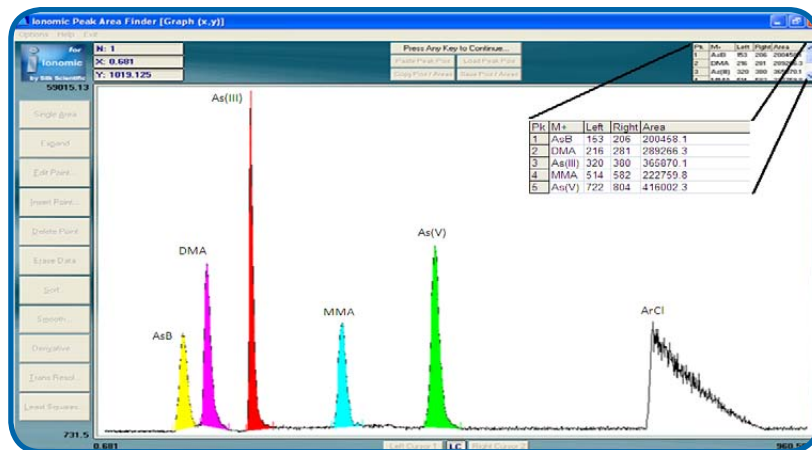
periSPEC Peak Area Finder Software

ESI software for chromatographic peaks

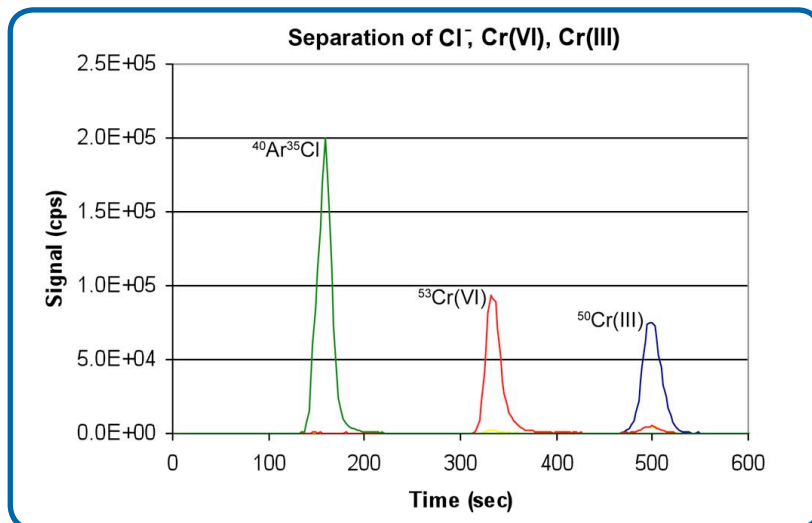
Quickly identify speciation peaks with periSPEC Peak Area Finder software by ESI. This easy-to-use, Excel-based software increases the speed of integration time for chromatographic peak areas. The versatile program can be used to determine the number of specific species that are present in a sample, generate calibration curves, and pinpoint possible interference peaks. The software can be used with data collected from any ICP or ICPMS instrument.

FEATURES AND BENEFITS:

- **Identify Multiple Peaks:** With periSPEC, elements with two or more species are quickly determined.
- **Isolate Interference Issues:** periSPEC displays the entire chromatographic data, so unusual peaks and possible species interconversion can be easily identified.
- **Generate Calibration Curves:** periSPEC analysis can be used to create accurate linear calibration curves for individual species.
- **Easy-to-Use:** The Excel-based software is intuitive and designed for streamlining data analysis.



periSPEC is a simple and relatively inexpensive software that utilizes an Excel-based spreadsheet to integrate the chromatographic peak areas for any number of species peaks.



periSPEC can be used to monitor possible interference peaks, such as the separation of $^{40}\text{Ar}^{35}\text{Cl}^+$, Cr(VI), and Cr(III). $^{40}\text{Ar}^{35}\text{Cl}^+$ was monitored as a proxy for the ClO^+ interference.

Along with the periSPEC software, ESI also offers speciation kits for a wide variety of elements:

Element	Species	Kit Number
Arsenic	As(III), As(VI), AsB, MMA, DMA	CF-KIT-As35
Chromium	Cr(III), Cr(VI)	CF-KIT-Cr36
Iodine	I ⁻ , IO ₃ ⁻	CF-KIT-I
Mercury	Hg, MeHg	CF-KIT-MeHg
Selenium	Se(IV), Se(VI)	CF-KIT-Se46